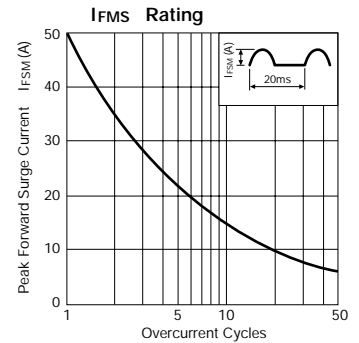
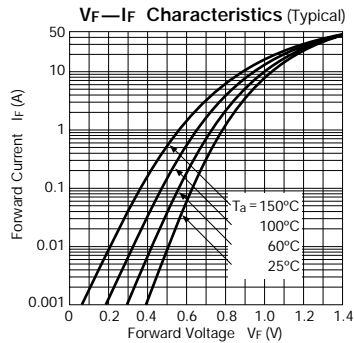
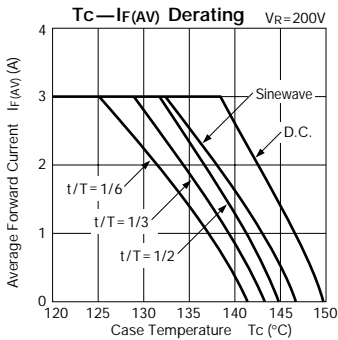


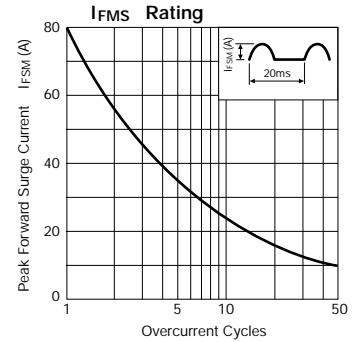
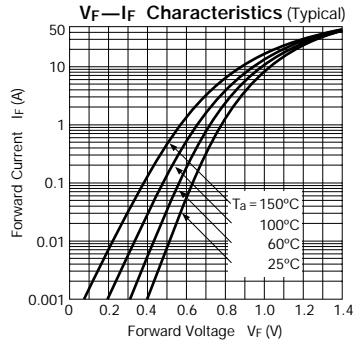
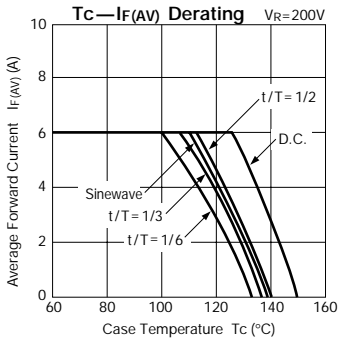
# Ultra-Fast-Recovery Rectifier Diodes (Power Surface Mount)

Parameter  Type No.	Absolute Maximum Ratings					Electrical Characteristics (Ta=25°C)								Others		
	V <sub>RM</sub> (V)	I <sub>F</sub> (AV) (A)	I <sub>FSM</sub> (A) 50Hz Half-cycle Sinewave Single Shot	T <sub>J</sub> (°C)	T <sub>stg</sub> (°C)	V <sub>F</sub> (V) max per element	I <sub>F</sub> (A)	I <sub>R</sub> (μA) V <sub>R</sub> = V <sub>RM</sub> max per element	I <sub>R</sub> (H) (mA) V <sub>R</sub> =V <sub>RM</sub> , T <sub>a</sub> =100°C max per element	t <sub>rr</sub> ① (ns) I <sub>F</sub> /I <sub>RP</sub> (mA)	t <sub>rr</sub> ② (ns) I <sub>F</sub> /I <sub>RP</sub> (mA)	R <sub>th</sub> (J-c) (°C/W)	Mass (g)	Fig.		
SPX-G32S	200	3.0	50	-40 to +150		0.98	3.0	50	10	30	100/100	25	100/200	5.0	0.41	Ⓐ
SPX-62S		6.0	80													

## SPX-G32S



## SPX-62S

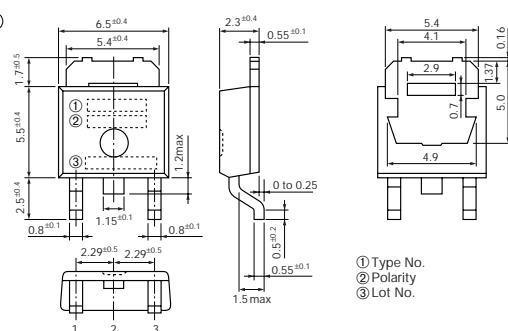


## External Dimensions

(Unit: mm)

Flammability:  
UL94V-0 or Equivalent

Fig. ①



① Type No.  
② Polarity  
③ Lot No.

	1	2 (Common to backside of case)	3
SPX-G32S	N.C	Cathode	Anode
SPX-62S	Anode	Cathode (Common)	Anode